

Strange Relations 4

by Kevin S.

This installment is a direct continuation of Strange Relations 3. And still my opinion based on evidence.



When we last left Naval Intelligence officer Henry Fonda he was selling us Zyklon B and asbestos disguised as a children's toy: the GAF View-Master. When Henry wasn't peddling poison he was apparently making the women in his life miserable. He first married actress **Margaret Sullavan** on **December 25**, 1931. Sullavan and Fonda separated after two months and divorced in **1933**. Sullavan was born in **Norfolk, Virginia, the daughter of a wealthy stockbroker**. Sullavan then married film director William Wyler. Wyler was born to a Jewish family in Germany and his mother was a cousin of Carl Laemmle, founder of Universal Pictures. At the time of her third marriage, Sullavan was pregnant with the couple's first child, a daughter named Brooke Hayward, who would become an actress and wife of **Dennis Hopper**. On **January 1**, 1960, at about **5:30** p.m. Sullavan was found in bed, barely alive and unconscious. She was rushed to a hospital but announced dead on arrival. She was **50** years old.



In 1936, Fonda married **Frances Ford Seymour** (**4/14/08** – **4/14/50**) and they had two children, Jane (born **12/21**, 1937) and Peter (born **2/23**, 1940), both of whom became successful actors. Frances was the daughter of an American industrialist whose family claimed ancestry from Henry VIII's third wife Jane Seymour – a fact that was reflected in Jane Fonda's full name being **Lady Jayne Seymour Fonda**. Frances Seymour's first, much older husband, businessman George **Brokaw**, was a violent alcoholic who beat her savagely. Henry Fonda was also cold and a bully, not to mention a shameless womanizer. When Henry Fonda asked her for a divorce to marry his 20-year-old mistress Susan Blanchard, Frances had a mental breakdown and had repeated stays in psychiatric hospitals. Allowed home briefly from a psychiatric institution (shadowed by nurses because she was on suicide watch) she managed to slip a tiny razor into her pocket. A week later, on her 42nd birthday, she shut herself in a bathroom at the hospital and used the razor to kill herself by slashing her throat from ear to ear. Henry Fonda arranged a private funeral with only himself and his mother-in-law Sophie Seymour in attendance.

It seems suspicious to me that a prominent family like the Seymours would just give this horrific event a pass. No lawsuits? No expressions of outrage in the press? I realize that mental illness was a stigma, but a two-person funeral for such a prominent person? I was also not able

to find any evidence of a death certificate at ancestry.com or anywhere else. It all sounds like the plot from a 1940's Hollywood melodrama and may have been faked.

Jane Fonda said she reviewed her mother's medical records and discovered she had been sexually abused by a piano tuner when she was **8** years old. She believes the ordeal left Frances traumatized, and turned her into a promiscuous adolescent who had nine abortions before Jane was born. But would a wealthy socialite's **nine** abortions be documented in the 1920s? Since the records aren't public we will just have to take Jane's word for it, I guess. Fonda made the personal revelation as she hosted an event celebrating the 40th anniversary of the Rape Treatment Center which was held at billionaire **Ron Burkle's** Greenacres estate in Beverly Hills. She doesn't seem like much of a daughter, does she, slandering the memory of her own mother in this way?

Jane Fonda has numerous charitable foundations that she has felt compelled to defend on her website:

All of my foundations, including the Jane Fonda Foundation referred to in the Smoking Gun website are in complete compliance with the applicable provisions of the Internal Revenue Code and Treasury regulations related thereto and I am appalled by the lack of integrity and misleading information that the press claims to think is news.

Perhaps Jane is being truthful, but her involvement with Ron Burkle is a red flag nonetheless:

Ronald Wayne Burkle is a prominent Democratic activist and fundraiser (aka lobbyist). At age 21, he married Janet Steeper, great-grandniece of the aviation pioneers, the **Wright** brothers (think Wright-Patterson AFB, home of the **88th** Air Base Wing. John McCain's mother was a Wright). Burkle made **at least one deal** (which probably means many) with the assistance of junk bond financier **Michael Milken** (Jewish, born **7/4**, indicted for racketeering and securities fraud in 1989. Since his release from prison, Milken has funded medical research). Burkle is also close friends with Bill Clinton. In 2009 Bill Clinton ended his relationship with Burkle's company due to potential "conflicts of interest" and "walked away" from a potential \$20 million payout. Yeah, sure he did. Burkle **secretly** organized a leveraged buyout (of Stater Bros.) with Charles Munger, vice-chairman of **Berkshire Hathaway**.



On April 30, 2008, a Delaware judge dismissed Ron Burkle's lawsuit against **Raffaello Follieri**, ex-boyfriend of actress **Anne Hathaway**, after Follieri agreed to repay **\$1.3** million Burkle loaned to him in the Vati-Con scandal. In 2004, **Anne Hathaway** developed a romantic relationship with Follieri, during which **she participated** in the development of the charitable Follieri Foundation, as a donor and **as a member of its board of directors** until 2007. In June 2008, it was investigated by the IRS, for failure to file required nonprofit information forms. Citing concern that this investigation and other legal issues in which Follieri was involved could hurt her acting career, **Hathaway ended their relationship in mid-June 2008**. On **June 24, 2008**, Follieri was arrested on **charges** of defrauding investors out of millions of dollars in a scheme in which **Follieri posed as the Vatican's point man on real-estate investing**.

This Follieri Foundation that Anne Hathaway participated in as a member of its board of directors was focused on efforts such as **providing vaccinations for children in poor countries**:

www.nydailynews.com **CIA will cease using vaccination programs as spy fronts: A top White House official has pledged that the CIA will no longer use vaccination programs as cover for spying operations. The agency used the ruse in targeting Osama bin Laden before the U.S. raid that killed him in 2011.**



Anne Hathaway's father and mother both have bios on IMDB and her maternal grandfather was a popular radio talk show host in Philadelphia. Despite these facts there is no genealogical information (that I could find) regarding the historic origins of Anne Hathaway's lineage. Could she really descend from the real Anne Hathaway, wife of Shakespeare, just as Jane Fonda descends from the real Jane Seymour?

Less than six months after the scandal Hathaway started dating Adam Shulman. The couple were married on **9/29/12** in an "interfaith" Christian and Jewish service.

Shulman also has no family history that I could find.

Returning to **Frances Ford Seymour** we find that she shared great-grandparents with **ACTORS**: Jean Arthur, Humphrey Bogart, Joan Crawford, Clint Eastwood, Henry Fonda, Paulette Goddard, Carole Lombard, Nancy Reagan, Robert Taylor, and Fay Wray. **ACTOR'S SPOUSES**: Shirlee Mae Adams, Phyllis Livingston Baker, Veronica Balfe, Kingman Douglass, and Louise Ten Broeck Treadwell. **INDUSTRIALISTS AND ACTIVISTS**: Charles Crocker, Mary Ann Deming, Henry Dewey Seymour, and Elizabeth Cady Stanton. She can also be directly linked to her first husband's cousin and well-known news anchor **Tom Brokaw (Matthew Marvin & Elizabeth Gregory, Fairfield CT) & (Thomas Moore & Ann Grafton, Salem MA)**. Frances' first husband George Tuttle Brokaw had been previously married to Ann Claire **Boothe** and they had one daughter named **Ann Claire Brokaw (8/22/24 – 1/11/44)**.



Boothe is the most important name there, since it links them to John Wilkes Booth and that lot.

Stanforddailyarchive.com Ann Clare Brokaw, 19, was killed when the car in which she was returning to Stanford collided with another car...Virginia Hobbs, also in the car, is recovering from minor injuries. **Although the collision was slight**, the door on Miss Brokaw's side of the car **flew open** when the car collided with a tree, throwing her between the door and the base of the tree. Subsequent examination showed that the **death was instantaneous**. Driving the other car was Kurt Bergel, 32, who escaped with a minor bruise.

On her 21st birthday, Ann Claire Brokaw was entitled to inherit more than 25% of the multi-million-dollar estate of her grandfather Isaac Vail Brokaw; the money instead went to her half-sister, Frances de Villers Brokaw. If you haven't already guessed, de Villers Brokaw is the daughter of Frances Ford Seymour and George Tuttle Brokaw. Also, half-sister to Jane and Peter Fonda. Frances de Villers Brokaw (**October 10, 1931 – March 10, 2008**), married Italian Consul General Francesco Corrias, and became a painter.

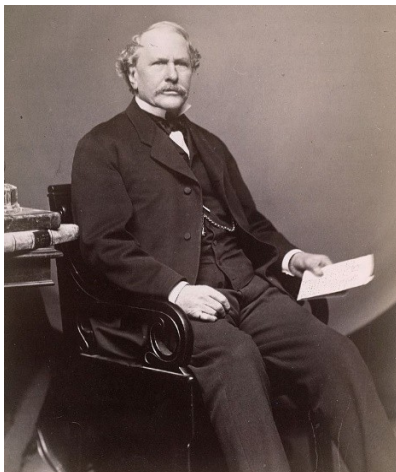
Miles: the de Villers are also in the French peerage, related to the Villiers in the English peerage. They are involved in hoaxes to this day: see for example Jacques Tremoulet de Villers, trying to re-establish the French Monarchy. This is a project. In the English peerage, the Villiers are related to the Stuarts and all the other top families. See the 1st Duke of Buckingham.

In *Strange Relations 3* we discovered that Tom Brokaw had five traceable generations of the name Cronkite in his family history. Is it possible that Tom Brokaw and Walter Cronkite are related? If you google the question the first result you will likely get is "*Tom Brokaw Next Cronkite Award of Excellence Recipient*". I'm sure Brokaw found a place for that award right next to his Peabodys (*to whom he is also related*). Tom Brokaw and Walter Cronkite share the following great-grandparents:

- **Jacob Cronkite** (1737-1796) & **Anna Ferguson** (1741-?) Rensselaer, New York
- **Henry Leland** (1625-1680) & **Margaret Babcock** (1632-1705) Sherborn, Massachusetts
- **Daniel Ladd** (1614-1693) & **Ann Moore** (1620-1694) Haverhill, Massachusetts
- **Robert Abell** (1605-1663) & **Joanna Hyde** (1618-1672) New London, Connecticut
- **Edmund Perry** (1588-1659) & **Sarah Crowell** (1592-1659) Barnstable, Massachusetts

So, yes, they are closely related. Explains a lot.

Robert Abell descended from a long line of English, Norman and French aristocrats and royalty. Writing in 1940, genealogist Horace Abell claimed that "probably all the present day Abells of New England stock are descended from Robert's three sons, Preserved, Caleb and Benjamin Abell."

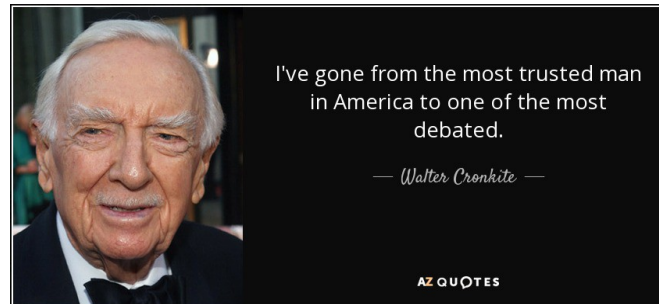


March Hoe.

Arunah Shepherdson Abell (**August 10, 1806 – April 19, 1888**) was an American publisher and "philanthropist" from New England who was active in Pennsylvania and Maryland. After stints with newspapers in Boston and New York City, he co-founded the *Public Ledger* in Philadelphia and later independently founded *The Sun* of Baltimore, Maryland; both were penny papers to appeal to the working class. Abell and his descendants continued ownership of *The Sun* as a family business until 1910.

Abell is noted as an innovative publisher in the newspaper business, making use of new systems and technology: pony express delivery of news from New Orleans, using the telegraph to transmit news from the first Mexican-American War and a President's speech to the Congress in Washington, D.C., and using the new rotary/cylinder printing press invented by Richard

Walter Leland Cronkite, Jr. (November 4, 1916 – July 17, 2009) (on November 4, 1952 the U.S. Government establishes the National Security Agency or NSA) Cronkite was an American broadcast journalist, best known as anchorman for the CBS Evening News for 19 years (1962–1981). During the heyday of CBS News in the 1960s and 1970s, he was often cited as "the most trusted man in America" after being so named in an opinion poll.



Cronkite attended college at the University of Texas at Austin, entering in the fall term of 1933. He was also a member of the Houston chapter of DeMolay, a **Masonic fraternal organization for boys**. It was named for Jacques de Molay, the last Grand Master of the **Knights Templar**. While attending UT, Cronkite had **his first taste of performance**, appearing in a play with fellow students **Eli Wallach and Ann Sheridan**. *(We aren't told how long Cronkite performed in the play but it indicates that he may have been merely "acting" like the most trusted man in America)*. Before looking at Cronkite's strange relations, we find we have stumbled upon another actress with an acute allergy to Y chromosomes, and so we pause to look at her.



Clara Lou "Ann" Sheridan (February 21, 1915 – January 21, 1967) was an American actress and singer. She worked regularly from 1934 to her death in 1967 (**33 years**), first in film and later in television. Tagged "The Oomph Girl"—a sobriquet which she reportedly loathed—Sheridan was a popular pin-up girl in the early 1940s. Sheridan married actor Edward Norris **August 16**, 1936, in Ensenada, Mexico. **They separated a year later** and divorced in 1939. On **January 5**, 1942, she married fellow Warner Brothers star George Brent. **They divorced exactly one year later**.

On **June 5**, 1966, she married actor Scott McKay, who was with her when she died on **January 21**, 1967 at the age of **51**. Despite three marriages, Ann Sheridan remained childless. It's rumored that Sheridan was a lesbian which is not surprising considering that each of her three "marriages" lasted for less than a year. **Ann Sheridan** shared great-grandparents with former **CIA director and investment banker Kingman Douglass** (**Kingman/Drake**, Weymouth MA), **Roscoe Arbuckle** (Holden/Dungan, Warwick RI), **Henry Fonda** (Hackley/Chickle, Newport England), **Henry Fonda's wife Shirlee Mae Adams & Clint Eastwood** (Davis/Willard, Barnstable MA), and **Jodie Foster** (**Greene/Almy**, Warwick RI). **Ann Sheridan was also related to Jodie Foster, Kingman Douglass, and Bette Davis** through (Samuel **Hinckley & Sarah Soole**, Barnstable MA).

And she was descended from scum-sucking General Phillip Sheridan, who broke all the rules of warfare against the South and against the Natives. She was also a Stewart and a Warren, as we see from her mother's names: Lula Stewart Warren. This links her to Jimmy Stewart and many others.

Tom Brokaw: Excuse My Goyische Yiddish Accent Former NBC Nightly News anchor Tom Brokaw spoke at the memorial service for Walter Cronkite this morning, praising Cronkite and how he shared the news with the country. He also had words of praise for Cronkite's longtime chief of staff, **Marlene Adler**, "who could teach Rahm Emanuel about being chief of staff" — a remark which got an appreciative response from the CBS-heavy (*and apparently Jewish-heavy*) audience. Brokaw, closing with a story about an Israeli asking about Cronkite, asked the audience to "pardon my Goyische Yiddish accent." During his speech, Brokaw also singled out Cronkite's former acting partner Eli Wallach (*a son of Jewish Polish immigrants*) as a distinguished member of the audience.



Former opera singer **Joanna Simon** (*sister of Carly Simon*) was Walter Cronkite's constant companion in the last four years of his life, summering in Martha's Vineyard and yachting off the East Coast with the legendary TV anchor. Simon and Cronkite grew close while each was mourning the loss of a spouse in 2005 — both had apartments in the **United Nations** Plaza building. Cronkite's chief of staff **Marlene Adler** received between \$50,000 and \$100,000 from Cronkite's estate, and Cronkite's executive assistant, **Julie Sukmann**, got between \$12,500 and \$50,000 (*those numbers are laughable. Cronkite and Simon*

probably spent that much on Moet and caviar during a weekend excursion). **Martha Adler** was a Vice President of marketing at **Bear Stearns** (1985-1992) before becoming Walter Cronkite's Chief of Staff (1992-2009) and the Chief Operating Officer of The Cronkite Ward Company (1992-2001). She was educated at The New School.

The New School is a private research university in Lower Manhattan, NYC. From its founding in **1919** by progressive New York educators, and for most of its history, the university was known as **The New School for Social Research**. The New School established the **University in Exile** in **1933** as a graduate division to serve as an academic haven for scholars escaping from Nazi Germany...The New School has launched or housed a range of institutions such as the World Policy Institute (*The World Policy Institute was founded in **1961** in New York City. The original name was Fund for Education Concerning World Peace through World Law. The founders of the institute, H.B. Hollins, a banker, and C. Douglas Dillon, banker, were influenced by **Grenville Clark**...In 1972 the institute merged with the Institute for International Order, which was founded in **1948**...The newly merged organization was called the **Institute for World Order***).

Between **1940 and 1949**, the New School was also host to the "Dramatic Workshop". Important acting teachers during this period were **Stella Adler** and Elia Kazan..." *I attended The New School for Social Research for only a year, but what a year it was. The school and New York itself had become a sanctuary for hundreds of extraordinary European Jews who had fled Germany and other countries before and during World War II, and they were enriching the city's intellectual life with an intensity that has probably never been equaled anywhere during a comparable period of time*" — Marlon Brando, actor (*and spook who appears on the cover of The Beatles' Sgt. Peppers album*).

The New School was funded by Hiram Halle, Jewish billionaire, and the Rockefeller Foundation. Making it a CIA front.

Walter Cronkite shared great-grandparents with **Roscoe Arbuckle** (Crowell/Yelverton, Devon England), **Carole Lombard** (**Cheney**/Waldron, Roxbury MA), **John Fairbanks** (**Fairbanks**/Adams, Dunham MA), **Shirlee Mae Adams** (Gowing/Brock, Lynn MA), **Phyllis**

Livingston Baker (Clark/Pepper, Medfield MA), **Charlie Chaplin's second wife Lita Grey** (Bullard/Bignett, Suffolk England), and **Dennis Hopper** (Thurston/Buck, Medfield MA). He is also related to **Dick Cheney** through **(Cheney/Cole, Roxbury MA)** **(Whitney/Bray, London England)** & **(Whitaker/Cooper, Rehoboth MA)**.

Returning to the Henry Fonda relationship roll call, we next encounter **Susan Blanchard**. She was **born Susan Jacobson** but took her mother's surname after her parents' divorce. Her mother married the lyricist and producer Oscar Hammerstein II.



Henry Fonda's supposed fourth wife was **Afdera Franchetti** (born c. 1931), an **Italian baroness, descended from an old Jewish family of Venice which intermarried with the Rothschild family** and who eventually "converted to Roman Catholicism". Sure thing, you bet, we believe you. She is most famous for being the fourth wife of American actor Henry Fonda.

The Italian Jewish Franchetti family, from the 18th century, was one of the wealthiest families in the Mediterranean. Afdera Franchetti was the daughter of Baron Raimondo Franchetti, a famous explorer who traveled extensively in Ethiopia and charted hitherto unexplored territories during the 1920s. Raimondo's grandmother was **Sara Louise de Rothschild** (1834-1924). Baron Franchetti died in a plane crash in 1935, when Afdera was three years old. Her brother, the Baron Raimondo Nanuk Franchetti, was a friend of author **Ernest Hemingway**, who hunted with him in San Gaetano. See Miles' paper "*The Stolen Century*".

(I'm a baroness, descended from the Rothschild's and all I got was this lousy wedding photo. Observe the unnatural way that their arms intertwine. It looks like a paste-up which Miles has confirmed. The checkerboard tiles are also a Freemasonic clue.)



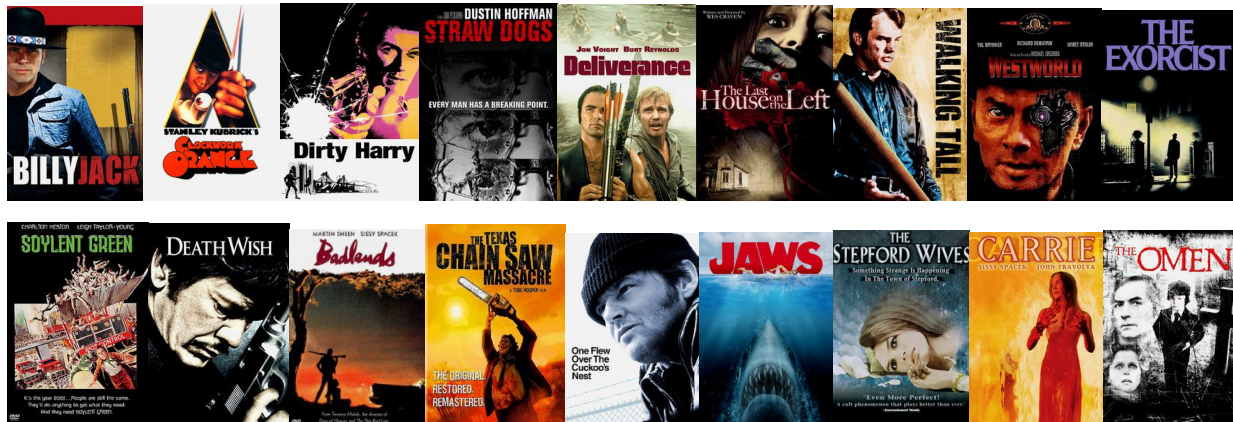
And finally, anyone who has followed *Strange Relations* from the beginning has seen the name of Henry's final wife **Sherrie Mae Adams** mentioned ad nauseam. Here she is with Henry attending Truman Capote's "**Black and White Ball**" in 1966 *(this party shares eerie similarities to the film 'Eyes Wide Shut')*. The ball was in honor of *The Washington Post* publisher Katharine Graham. *(Katharine Graham was born Katharine Meyer into a privileged Jewish family in New York City. Her father bought The*

Washington Post in **1933** at a bankruptcy auction). **Sherrie Mae Adams** was directly related to *(in alphabetical order)*: **Phyllis Livingston Baker, Lucille Ball, Humphrey Bogart, Tom Brokaw, Charles Crocker, Walter Cronkite, Bette Davis, Mary Ann Deming, Daisy DeVoe, Kingman Douglass, Araminta Durfee, Max Eastman, Clint Eastwood, Peter Folger, Henry Fonda, Paulette Goddard, Lita Grey, Mildred Harris, John Hinckley, Nancy Reagan, Ginger Rogers, Frances Ford Seymour, Ann Sheridan, Robert Taylor, Louise Ten Broeck Treadwell, and Fay Wray** and through them to every other famous person.

The Fonda's would dust off their relative **Katharine Houghton Hepburn** to play Henry's last "movie wife" in the family drama *On Golden Pond*. *(Frances Ford Seymour was a Houghton and Henry was a distant cousin)*. It would also be Henry Fonda's final film role.

One of Jane's most famous films was *Klute*, the first installment of what informally came to be known as director Alan Pakula's "**paranoia trilogy**". The other two films in the trilogy are *The Parallax View* (1974) and *All the President's Men* (1976). In *The Parallax View*, TV

newswoman Lee **Carter** is one of many witnesses to the public assassination of a presidential candidate. By the time of the release of *Taxi Driver* and *All the President's Men* in 1976, the American public had already been bludgeoned by a spate of “paranoia” and “revenge” films:



The shotgun blast that concluded the film *Easy Rider* (1969) was the propellant for this new paranoia/revenge genre. Is it just a coincidence that the release of these films coincided with the Watergate psyop? I mean, how could you possibly pay attention to the CIA takeover of your government when racists, punks, hippies, hillbillies, drifters, rednecks, robots, Satan, corporations, blacks, serial killers, cannibals, sharks, loners, witches, the health-care system, and the antichrist were lurking around every corner waiting to rape, emasculate, possess, lobotomize, kill, and/or devour you? Remember that this era pre-dated the internet, DVD's, Cable TV, and even VCR's and Hollywood only released about 15-20 big-budget films per year. Television provided three channels that signed off at midnight with the National Anthem. Going to the movie theater was an event and people lined up around the block to see films like *The Exorcist*. In hindsight, this new genre appears to have been a set-up for the whitewashing of Watergate and the reselling of Vietnam and war in general (*Coming Home* '78, *The Deer Hunter* '78, *The Great Santini* '79. and *Apocalypse Now* '79).

All the President's Men was released during the bicentennial when Pro-American sentiment was at a fever pitch and it was also during this time that Hollywood (*CIA West Division*) felt secure enough to begin to tell the “truth” with films like *Three Days of the Condor* '75, *Network* '76, *Marathon Man* '76, *Capricorn One* '77, *The Boys from Brazil* '78, *Coma* '78 and *The China Syndrome* '79. In hindsight, we can now see these films as blatant misdirection, or at best, half-truths.

From Miles' 12/13/13 paper “Watergate Unstoppered”:

Congress wasn't investigating the CIA beginning in 1974 because of CHAOS or foreign operations. Obviously, Congress was investigating the CIA in 1974 because of things the CIA had just done in 1972-73, and these things were much bigger than CHAOS or even the overthrow of Allende. That's right. The CIA had just overthrown Nixon, using Watergate as a cover, and most in Congress knew that. Congress couldn't admit it knew that, but Congress hoped that those watching would get the clue. We never did.

I am proposing that this new paranoia/revenge genre of filmmaking was a big reason **why we never did**. The American public was, in effect, subjected to a magic act that diverted their focus to the left-hand (*Hollywood*) while picking their pocket with the right (*Washington D.C.*). Of course, Hollywood and D.C. are only two of the prongs on the controller's pitchfork. The news media (*i.e. Walter Cronkite and Katharine Meyer's Washington Post*) was doing its typical

yeoman's job of selling the mainstream stories and half-truths about Vietnam, the Manson Family psyop, the Weather Underground psyop, the Patty Hearst psyop, and Watergate, while conveniently ignoring the Gulf of Tonkin Resolution. Again, from *Miles paper* "**Watergate Unstoppered**":

This (Gulf of Tonkin Resolution) was a bold Congressional action, maybe the boldest we have seen in our lifetimes, and Nixon was blamed (by the CIA) not only for allowing it to happen, but for actually supporting it and signing it. It removed Congressional approval for the war and gave the Pentagon no real authority to keep fighting. It also led inexorably to more bold moves by Congress, including the War Powers Act of 1973, which temporarily reversed the complete takeover of foreign policy by the executive branch. These things were far more important to the history of the US, and to the events of the time; and compared to them Watergate is just frosting. But if you look at the amount of press generated, there is no comparison. Everyone knows about Watergate; almost no one knows about the repeal of the Gulf of Tonkin Resolution. In this sense, Watergate was a diversion. It had a two-fold purpose: get rid of Nixon and divert the public eye away from the more important events. It succeeded admirably.



All the President's Men (1976) "*The Washington Post*" reporters Bob Woodward and Carl Bernstein uncover the details of the Watergate scandal that leads to President Richard Nixon's resignation. Since this film can now be seen for the blatant (and overrated) propaganda that it is, let's take a closer look at the individuals involved in its creation.

Screenwriter **William Goldman** (8/12/31) was born in Chicago and grew up in a Jewish family. Goldman received a bachelor of arts degree from Oberlin College (*member of the Annapolis Group, organized in 1993 in Annapolis Maryland, home of the U.S. Naval Academy*), then went into the **army**. "He knew how to type, so was sent to the **Pentagon**" (*what?*). He then matriculated at **Columbia University**. Goldman also wrote the screenplays for "The Stepford Wives" and "Marathon Man" which was based on his novel.

Director **Alan J. Pakula** (4/7/28 – 11/19/98) was born in The Bronx, New York to parents of Polish Jewish descent, Jeanette (nee Goldstein) and Paul Pakula. He was educated at **Yale University**.

Actor **Dustin Hoffman** (8/8/37) was born in Los Angeles, California, the second son of Lillian (nee Gold) and Harry Hoffman. (*How could this film possibly fail with so much **Gold** behind it?*) Hoffman is Jewish, from an Ashkenazi family of immigrants from Ukraine, Poland, and Romania (the family's surname was spelled "Goikhman" in the Russian Empire). Dustin Hoffman's maternal grandmother was an Epstein and his paternal grandmother's name was Schiskoski. This is all that is known of Dustin Hoffman's ancestry. Hoffman got his big break in *The Graduate* (1967). He credits director **Mike Nichols** for taking a great risk in giving him, a relative unknown, the starring role.

Mike Nichols was born Mikhail Igor Peschkowsky (11/6/31 – 11/19/14, again **Knights Templar 1119**) in Berlin, Germany. His father was born in Vienna, Austria, to a Russian Jewish immigrant family. Nichols' mother's family were German Jews. His maternal grandparents were anarchist Gustav Landauer and author Hedwig Lachmann. Nichols is a third cousin of scientist Albert Einstein. Nichols married ABC World News anchor **Diane Sawyer** on 4/29/88.



Early in her career, Sawyer was a member of U.S. President Richard Nixon's White House staff and closely associated with the president himself. So why are these terrible paste-ups the only photos I can find?

In 1967, she received a Bachelor of Arts degree with a major in English from Wellesley College in Wellesley, Massachusetts. She was a member of the Wellesley College Blue Notes, an a-cappella-singing group, and Phi Sigma Lecture Society. She attended one semester of law school at the University of Louisville before turning to journalism.

Immediately after her graduation, Sawyer returned to Kentucky and was employed as weather forecaster for WLKY-TV in Louisville. Finally, Sawyer was promoted to a general-assignment post, but this did not sustain her interest for long. In 1970, Sawyer moved to Washington, D.C., and, unable to find work as a broadcast journalist, she interviewed for positions in government offices. She eventually became an assistant to Jerry Warren, the White House deputy press secretary. Initially, Sawyer wrote press releases and quickly graduated to other tasks like drafting some of President Richard Nixon's public statements. Within a few months, she became an administrative assistant to White House Press Secretary Ron Ziegler and eventually rose to become a staff assistant for U.S. President Richard Nixon. In 1973 when John Dean testified to the Senate Watergate Committee concerning Nixon's involvement in the Watergate coverup, Sawyer and Larry Speakes were assigned to the staff of Nixon's lawyer J. Fred Buzhardt in an effort to "prove" that Dean was lying. Speakes later claimed that he had come to the conclusion that Dean had not lied, and that he informed Sawyer, but they continued their efforts. (*ethics schmethics*).

Sawyer continued through Nixon's resignation from the presidency in 1974 and worked on the Nixon-Ford transition team in 1974–1975, after which she decamped with Nixon to California and helped him write *RN: The Memoirs of Richard Nixon*, published in 1978. She also helped prepare Nixon for his famous set of television interviews with journalist David Frost in 1977. (*Those are some impressive accomplishments for a 20-something former Junior Miss/Weather forecaster from Kentucky with one semester of law school at the University of Louisville under her belt*).

Years later, Sawyer would be suspected of being Deep Throat, the source of leaks of classified information to journalist Bob Woodward during the Watergate scandal. In 2005, Deep Throat was identified as W. Mark Felt, but prior to that, Rabbi Baruch Korff – **a longtime Nixon confidant and defender known as "Nixon's rabbi"** – said on his deathbed that he believed Sawyer was Deep Throat. Sawyer laughed it off and became one of six people to request and receive a public denial from Woodward. (*Was Diane Sawyer Richard Nixon's handler? And why does Nixon have a rabbi?*)

Once again from Miles' paper Watergate Unstoppered:

Deep Throat is more misdirection, another decoy. To accept the idea of a deep throat, you have to assume that someone is necessary as a go-between from those who have

information in the government to the press. But of course, the Church Committee proved that is false. In congressional testimony in 1975-76, the CIA admitted it had been in control of large parts of the media since the early 1950's. In 1972, the CIA had people in major positions in the press, so no pipeline was necessary...meeting secret sources, that is all Hollywood bullshit.

An examination of Diane Sawyer's genealogy reveals the usual links to royalty:



Sir **Robert Gordon, 1st Baronet** (1580–1656) was a Scottish politician and courtier, known as the **historian** of the noble house of Sutherland. In 1624 Gordon was appointed one of the commissioners of the estates of the young Duke of Lennox, and two years later one of the duke's curators. On 28 May 1625, then a gentleman of the privy chamber to Charles I, he was created premier baronet of Nova Scotia and he obtained a charter under the great seal **granting to him sixteen thousand acres on the coast of Nova Scotia**, which were erected into a barony. A favourite of King Charles, he was employed as confidential messenger to Henrietta Maria.

He had issue five sons and four daughters, including his eldest son, Sir Ludovick Gordon (1614–85) and a daughter Katherine (1621–83), married to **Colonel David Barclay**. (*think Barclay's Bank*)



Sir **Robert Throckmorton** (c. 1513 – 12 February 1581) was a distinguished English Tudor courtier. Sir Robert Throckmorton's mother was the daughter of Elizabeth FitzHugh. This connection made Throckmorton a first cousin to queen consort Catherine Parr and her brother William Parr, 1st Marquess of Northampton.

The sons of his daughters Anne and Muriel, were **Robert Catesby** and Francis Tresham of 'Gunpowder Plot' infamy.

One of Robert Catesby's co-conspirators was Guy Fawkes whose face is exemplified by the mask worn by V in the comic book *V for Vendetta*, who fights a fictional fascist English state. It is also the image of the hacktivist entity known as Anonymous.

Dick Cheney and **Clint Eastwood** are fellow descendants of the Throckmorton line. **Diane Sawyer** is also directly related to coffee heir and socialite **Peter Folger** through (**John Cooke & Sarah Warren**, Bristol MA), actress **Jean Arthur** (**Matthew West & Margery Reeves**, Newport RI), **Walter Cronkite's former co-star Ann Sheridan** (**William Almy & Elizabeth Barlowe**, Newport RI), **Lon Chaney's wife Frances Creighton** (**Freegift Stout & Mary Higgins**, Amwell NJ) and **Jodie Foster** (**West/Reeves & Almy/Barlowe**). Sawyer's first job in Washington was assistant to White House deputy press secretary Jerry **Warren**. Jean Arthur's actual last name is **Greene** and Lon Chaney's name is a derivation of **Cheney**.

The role of Bob Woodward in *All the Presidents Men* was played by **Charles Robert Redford** (8/18/36). He attended the University of Colorado but was kicked out for heavy drinking after a year and a half. Later he traveled Europe, living in France, Spain, and Italy. He later studied painting at the Pratt Institute in Brooklyn. (*Redford has four traceable generations of Pratts in his family lineage*). He also took classes at the American Academy of Dramatic Arts in New York City (*Anne Hathaway is another notable alumnus*). Redford supports environmentalism, Native American rights, LGBT rights, and the arts **or pretends to**. Redford supported his friend Gary **Herbert** in his successful 2004 campaign to become Governor of Utah. Herbert is a Mormon who served six years in the Utah Army National Guard.

Herbert is another name from the peerage, as we have seen in many recent papers.



Redford's first wife was Lola Van Wagenen who was raised in a **Mormon** family in Provo, Utah. Van Wagenen is an **American historian**, feminist, and environmental activist. Their second child, Shauna Redford is a painter and married to journalist Eric Schlosser. **Eric Matthew Schlosser** (born **August 17**, 1959) is an American author known for investigative journalism, such as in his book *Command and Control: Nuclear Weapons, the Damascus Accident, and the Illusion of Safety* (2013). Schlosser was born in Manhattan, New York. His parents are Judith (née Gassner) and Herbert Schlosser, a former **Wall Street lawyer** who turned to broadcasting later in his career, eventually becoming the **President of NBC** in **1974** (*the year of Nixon's resignation*). Schlosser studied **American History** at **Princeton University** and earned a graduate degree in **British Imperial History** from **Oxford**. (*Gassner is an Ashkenazic Jewish name. Schlosser is Jewish as well.*)

Lola Van Wagenen and Redford divorced in 1985. In 2009, Redford married his "longtime partner", Sibylle Szaggars. **Robert Redford** shares great-grandparents with **Tom Brokaw** (Swift/Tobey, Barnstable MA), **Robert Duvall** (Tinsley/Randolph, New Kent VA), **Henry Fonda & Sherrie Mae Adams** (Warren/Walker, Plymouth MA), **Jodie Foster & William Sloane Coffin** (Chipman/Howland, Barnstable MA), **Kingman Douglass & Jean Arthur** (Hoskins/Filer, Hartford CT), **Clara Bow** (Marvin/Gillyat, New London CT), **Charles Crocker** (Swift/Gibbs and Howland/Tilley, Barnstable MA), and **Mary Ann Deming** (Kelsey/Hoskins, Hartford CT).



On September **8**, **1974**, Gerald Ford gave Richard Nixon a full and unconditional pardon for any crimes he might have committed against the United States while President. The Nixon pardon was highly controversial. *The New York Times* stated that the Nixon pardon was a "profoundly unwise, divisive and unjust act" that in a stroke had destroyed the new president's "credibility as a man of judgment, candor and competence". On **October 17**, **1974**, Ford testified before Congress on the pardon. He was the first sitting President since Abraham Lincoln to testify before the House.



Gerald Rudolph Ford Jr. (born **Leslie Lynch King Jr.**; **July 14**, **1913** – December **26**, **2006**) was born at **3202** Woolworth Avenue in Omaha, Nebraska, where his parents lived with his paternal grandparents. His mother was **Dorothy Ayer Gardner** and his father was **Leslie Lynch King Sr.**, a **wool trader** and a son of prominent **banker** **Charles Henry King** and **Martha Alicia King** (née Porter). It is possible to trace Gerald Ford's paternal lineage, but not many connections to other prominent people are discovered. The only

surprising name was an Anna Braun (1674-1724) from Baden-Wuerttemberg, Germany. So, Gerald Ford could possibly have been related to Eva Braun. His paternal grandmother's name was Martha Porter and this area is roped off. Move along...nothing to see here.

Actually, I see a lot. It is a huge red flag that *all three* of his names changed. Why would his mom change his first and middle names upon remarrying? This is spooky in the extreme. The name King links him to that prominent family, including many billionaires, also F. Scott Fitzgerald, C. S. Lewis, Jeff Bezos, etc. The name Ayer links him to the Ayres and Eyres, who were prominent in the Salem Witch hoax and before that in the English peerage. Think Jane Eyre. The name Braun almost certainly links him to Eva Braun and the great Nazi hoax. Even the names Lynch and Gardner are important, since they also link him to the top families. But Ford's link to this wool trader King had to be broken, since even that is a clue. Wool trading has long been a Jewish line.

But the funniest thing I see here is that Gerald Ford was related to Chevy Chase. He is related in many lines, but the easiest is the Ayer line, which takes him back to Salem. The Chase line also goes back to Salem, and the families were intermarrying at that time. I am sure there are more recent links, but that is perhaps the most obvious. Those who don't know why this is funny should consult the early SNL skits, where Chase made fun of Ford by falling asleep and falling over. Turns out it was just cousins teasing each other.



Dorothy Ayer Gardner King Ford (2/27/1892 – 9/17/67) Gerald's mother Dorothy was born in the small town of Harvard, Illinois to Levi Addison Gardner, (Levi is Jewish) a businessman and one-time mayor, and Adele Augusta (Ayer) Gardner. Her great-uncle Eldridge Ayer had purchased the town along with Amos Page and Otis Eastman. These three men **named it "Harvard" in honor of Harvard, Massachusetts**. Shortly afterward Page and Eastman sold their shares to Ayer. Through his mother, Gerald Ford shares great-grandparents with the following people:



Max Eastman (Mallory/Trowbridge, Fairfield CT). Eastman was a supporter of socialism. For several years he edited *The Masses*, a magazine that combined social philosophy with the arts. Its contributors during this time included Louise Bryant, Mabel Dodge Luhan, and John Reed. Eastman's parents were friendly with Mark Twain. Twain married Olivia Langdon Clemens in the church where Eastman's parents served as pastors. There is no mention of Max Eastman being Jewish on Wikipedia but he is. His father's name was Samuel Elijah Eastman and following that line we also find Abihue and Benjamin. Abihue's wife was Bathsheba Gardner, daughter of Bathsheba Watson, daughter of Bathsheba Smith. We also find Ephraim and Josiah Chapin. Max Eastman's mother's name was Annis Bertha Ford but her history is scrubbed. She may have had a grandmother named Sarah King.

Lucretia Coffin (Coffin/Stevens, Nantucket MA). American Quaker, the second child of Anna Folger and Thomas Coffin. Her cousin was Benjamin Franklin.

Margaret Fuller (Moulton/Smith, Norfolk England). American journalist and women's rights advocate associated with the American transcendentalism movement and frequent visitor to Brook Farm. She faked her death. **Carole Lombard** (Pinney/Hull, Hartford CT). Lombard

was a propagandist who also faked her death at the age of 33. **Paulette Goddard** (Robert Clement 1634-1714 & Elizabeth Fawne 1631-1715, Essex MA). Goddard was born Marion Levy.



Lillian Gish (Adams/Wilmot, Essex MA). Lillian and her sister Dorothy were rumored to be frequent guests to Alla Nazimova's "sewing circle" lesbian orgies. The Russian Jewish immigrant Alla Nazimova was Nancy Reagan's godmother. The Gish sister's maternal grandmothers name was Elizabeth Robinson. Following that line, we find Samuel, Abraham, and Israel. Elizabeth Robinson's mother was a Barnard, descended from Lemuel, Salah, and Ebenezer. Lillian Gish never married nor had children. Dorothy Gish married once but remained childless. Time for an update which will also include Paulette Goddard and Walter Cronkite's co-star Ann Sheridan.

- 19 top Hollywood actresses born before 1920
- 57 marriages
- 1 birth (later estranged & disinherited)
- .018 births per marriage

Continuing the Gerald Ford family reunion:

Kay Francis (Richard Thurlow 1606-1685 & Jane Booth 1610-1683, Essex MA). **Robert Taylor** (Davis/Thayer, Essex MA). **Fay Wray** (Bissell/Drake, Hartford CT). **John Fairbanks** (Adams/Squire, Norfolk MA). **Lucille Ball** (Jones/North, Essex MA). **Phyllis Livingston Baker** (Wakeman/Goode, Worcestershire England). **Humphrey Bogart** (Sheldon/Cleremont, Middlesex MA) (Hyde/Lee, New London CT) (Porter/White, Hartford CT).

Bette Davis (Tristram Coffin 1632-1704 & Judith Greenleaf 1625-1705, Essex MA)

(James Davis 1589-1675 & Cicely Thayer 1600-1673, Essex MA)

(Aquila Chase 1618-1670 & Anne Wheeler 1629-1687, Essex MA)

Gerald Ford's 3rd g-grandmother was Mary Chase 1784-1854. She was married to (Samuel Ayer 1777-1847). This Chase line is traceable for another fifteen generations all the way back to 1300.

See, I told you. Kevin just found a more recent link between Gerald Ford and Chevy Chase, and it included an Ayer.

But this is the Chase that is most commonly associated with Gerald Ford.



Chevy Chase's signature routine during the first season of *Saturday Night Live* was a recurring impersonation of Gerald Ford, often opening the show with an elaborate pratfall. Calling it an impersonation is too generous since it merely consisted of Chase acting like an idiot and falling down. As you can see Gerald was happy to pose with the man portraying him as a buffoon.

Gerald Ford also shared great-grandparents with:

Henry Fonda (Gilman/Clark, Plymouth MA).

Francis Ford Seymour (Seymour/Ruscoe, Fairfield CT) (Lord/Nickerson, New London CT).

Shirlee Mae Adams (Mallory/Trowbridge, Fairfield CT).

Jodie Foster (Richard **Ingersoll** 1587-1644 & Ann **Langley** 1590-1677, Salem MA).

Dennis Hopper (Stephen Hopkins 1581-1644, Mayflower Passenger).

Clint Eastwood (Pease/Rodans, Salem MA).

Former CIA Director Kingman Douglass (**Chase/Wheeler**, Essex MA) and (**Ingersoll/Langley**, Salem MA)

Former First Lady Nancy Reagan through (Pinney/Hull, Hartford CT) and (Bissell/Drake, Hartford CT).

Gerald Ford and Robert Redford are related through (Abner Comstock 1727-1811 & Eunice Goodspeed 1731-1809, New London CT) (Samuel **Selden** 1695-1745 & Deborah Dudley 1701-1800, New London CT) (John Pratt 1644-1726 & Sarah Jones 1644-1726, Middlesex CT) (Richard Ely 1610-1684 & Joan Phipps 1624-1660, New London CT). Robert Duvall's middle name is **Selden**. Duvall grew up in Annapolis, Maryland, the son of a U.S. Navy Admiral.



Cronkite on the Crime of the Century: “The Watergate Caper”

New York (CBS) The year was 1972. Two young reporters from the *Washington Post* were on the trail of one the most explosive stories in decades. Watergate. **But it was Walter Cronkite who brought the revelations and latest details of the scandal to the national television audience.** With his steady and straightforward delivery, “the most trusted man in America” **gave legitimacy to what was then a developing story**, one that ultimately resulted in the indictment and conviction of several of President Richard Nixon's closest advisors, and in the resignation of the President himself. CBS News presented a two-part, 22 minute, overview of the Watergate scandal in **October** 1972. The first segment was 14 minutes, the second was **eight**. **The reports are now credited with keeping the story alive and served as a turning point in a case that came to grip America.** “The fact that Cronkite did Watergate at all gave the story a kind of blessing, which is exactly what we needed,” wrote Ben Bradlee, **Washington Post editor** during the Watergate era, in *Newsweek* last Friday. **Bradlee said that it was Cronkite that made heroes of reporters Bob Woodward and Carl Bernstein...The story netted Cronkite an Emmy for his coverage,** an award that he was said to have valued most out of all the others. **“That’s the big doozy,”** he said of the award to one friend.

Gerald Ford and Walter Cronkite were related through **Daniel Poore 1590-1623 & Joan Deane 1592-1655**, Essex MA.

Gerald Ford and Tom Brokaw were related through **John Bennett 1626-1691 & Ursula White 1634-1703**, New London CT, **William Gifford 1615-1687 & Patience Russell 1619-1656**, Barnstable MA and **Thomas French 1584-1639 & Susan Riddlesdale 1584-1658**, Essex MA.

Gerald Ford shared great-grandparents with **Dick Cheney** through **(Clement/Ayer, Ayer/Palmer, Chase/Wheeler, and French/Riddlesdale.... all of Essex Massachusetts).** **Essex is Salem.**



Ford faced two assassination attempts during his presidency. In Sacramento, California, on September 5, 1975, Lynette "Squeaky" Fromme, **a follower of Charles Manson**, pointed a Colt .45-caliber handgun at Ford. As Fromme pulled the trigger, Larry Buendorf (former U.S. Naval Aviator), a Secret Service agent, grabbed the gun, and Fromme was taken into custody. She was later convicted of attempted assassination of the President and was sentenced to life in prison; she was paroled on August 14, 2009 (**33 years after the crime**). I now defer to Miles' summation of Lynette Fromme from *The Tate Murders Were Faked 6/29/14*:

Lynette Fromme won awards in high school for DRAMA, poetry, and dancing. She was popular and well-liked, not at all a problem child. She was known as the Manson family's den mother. Barbara Hoyt described her as "maternal" and as "a very loving person." She grew up in Hollywood (Santa Monica, Redondo Union HS) and as a teen she dated Bill Siddons, who went on to manage The Doors. Her father was an aeronautical engineer, which means he probably worked for the military.

Lynette's Fromme's history is mostly scrubbed. Her father William was born in a test tube. **Right.** Lynette's mother's name was Helen **Benzinger** which doesn't get us very far, but it did provide this snippet of information from findagrave.com:

Marie I. (Marion) Trail, 91, passed away September 21, 2011 at Canyonlands Care Center in Moab, Utah. Marion was born June 30, 1920 to Archie and Gertrude Becker **Benzinger** in Effington, Minnesota. She grew up in Minnesota and attended school there. **In the early 1940's she moved with her sisters to Los Angeles, CA to work at the Defense Plants for Douglas Aircraft during WWII.** There she met George Trail and they were married in Las Vegas, Nevada in 1945. **She is survived by** her daughter Sandra Grandin and **sister Helen Fromme.**

I assume they were all Jewish. Look up Benzinger Jewish.



Isn't she just the most precious assassin you've ever seen?

In reaction to this attempt, the Secret Service began keeping Ford at a more secure distance from anonymous crowds, a strategy that may have saved his life **seventeen** days later. As he left the **St. Francis Hotel in downtown San Francisco (1)**, Sara Jane **Moore (2)**, standing in a crowd of onlookers across the street, pointed her .38-caliber revolver at him. Moore fired a single round but missed because the sights were off. Just before she fired a second round, retired Marine **Oliver Sipple (3)**, grabbed at the gun and deflected her shot; the bullet struck a wall about six inches above and to the right of Ford's head, then ricocheted and hit a **taxi driver (4)**, who was slightly wounded. Moore was later sentenced to life in prison. She was paroled on December 31, 2007, after serving 32 years.

Moore is one of the families, related to King. See my paper on C. S. Lewis. Also see the recent paper by another guest writer on Affleck/Damon, who are also related to the Moores.

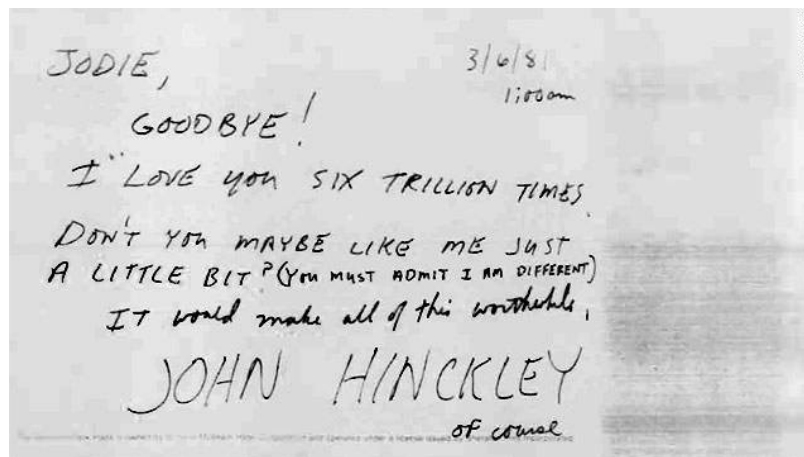
- 1.) **St. Francis Hotel in downtown San Francisco:** In the very first Strange Relations profile we learned that the "Fatty Arbuckle Scandal" was a hoax. The alleged crime took place at the St. Francis Hotel. The St. Francis Hotel was begun by the trustees of the estate of **Charles Crocker**, one of "The Big Four" " railroad magnates who had built the western portion of the transcontinental railway. In that profile, we also discovered that Charles Crocker was very likely Fatty Arbuckle's (unacknowledged) natural father.
 - **Gerald Ford** was related to **Roscoe Arbuckle's wife Araminta Durfee** through (Adam Mott 1623-1673 and Mary Lott 1631-1712, Newport RI)
 - **Gerald Ford** was related to **Charles Crocker's wife Mary Ann Deming** through (Richard Ingersoll 1587-1644 and Ann Langley 1590-1677, Salem MA)
 - **Gerald Ford** was related to **Roscoe Arbuckle** through (Robert Adams 1602-1682 and Eleanor Wilmot 1610-1677, Rockingham RI) & (John Moulton 1599-1657 and Anne Green 1599-1688, Rockingham RI)
 - **Gerald Ford** was related to **Charles Crocker** through (Samuel Hyde 1637-1677 and Jane Lee 1640-1722, New London CT) & (John Clarke 1637-1712 and Rebecca Marvin 1639-1712, New Haven CT)
- 2.) **Moore:** I can connect that surname to: Eliakim Crosby, Lindley Murray Moore, Bette Davis, Ginger Rogers, Carole Lombard, Katharine Hepburn, Francis Ford

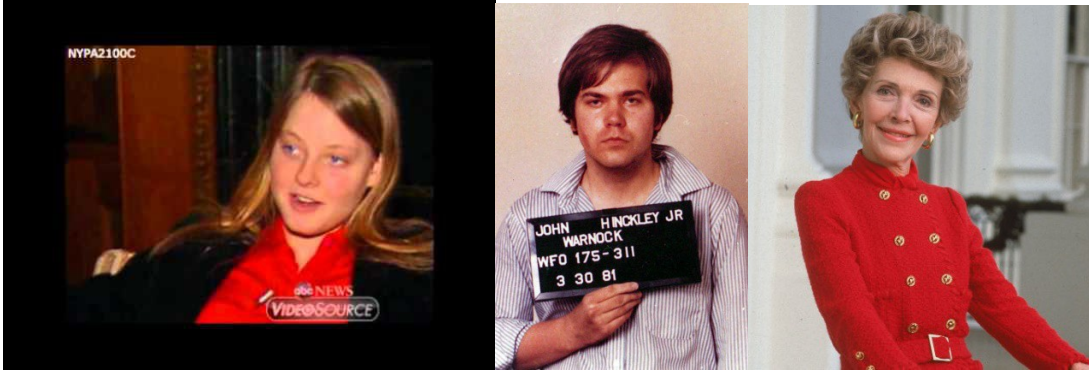
Seymour, Phyllis Livingston Baker, Warren Beatty, Kingman Douglass, Henry Fonda, Robert Taylor, Nancy Reagan, Lucille Ball, Mary Tyler Moore, Don Knotts, Dick Cheney, Robert Duvall, Marlon Brando, Thomas Brokaw, John Hinckley, Walter Cronkite, and Ann Sheridan.

- 3.) **Oliver Sipple:** Oliver Wellington "Billy" Sipple was a decorated US Marine and Vietnam War veteran. The subsequent public revelation that Sipple was gay turned the news story into cause celebre for **LGBT** rights activists, leading Sipple to unsuccessfully sue several publishers for invasion of privacy. Sipple was active in local causes, including the historic political campaigns of openly gay Board of Supervisors candidate Harvey Milk. The two were friends and Sipple would also be later described as a "prominent figure" in the gay community who had worked in a gay bar and was active in the Imperial Court System.



- 4.) **Taxi Driver**, the film, and Jodie Foster's role in it, would later become John Hinckley's motivation for his attempted assassination of Ronald Reagan.





Jodie Foster is related to **Nancy Reagan** (**Spencer/Whitbread**, Bedfordshire England) and **John Hinckley** (**Hinckley/Soole**, Barnstable MA)
John Hinckley is related to **Nancy Reagan** (**Robbins/Bidwell**, Hartford CT).
 Nancy Reagan was born Anne Frances **Robbins**.

Jodie Foster is also related to: Henry Fonda, Kingman Douglass, William Sloane Coffin, Dick Cheney, Tom Brokaw, Jean Arthur, Peter Folger, Susan B. Anthony, Abigail Lydia Mott, Roscoe Arbuckle, Mary Ann Deming, John Fairbanks, Clint Eastwood, Warren Beatty, Shirley MacLaine, Katharine Hepburn, Bette Davis, Phyllis Livingston Baker, Veronica Balfe, Paulette Goddard, Lucille Ball, Robert Taylor, Humphrey Bogart, Ann Sheridan, Diane Sawyer, and Gerald Ford.

John Hinckley is also related to: Kingman Douglass, Bette Davis, Dennis Hopper, Henry Fonda, Phyllis Livingston Baker, Margaret Fuller, Fay Wray, Shirlee Mae Adams, Frances Ford Seymour, Clint Eastwood, Humphrey Bogart, and Ann Sheridan.

This is very likely the final installment of 'Strange Relations' since it's beginning to feel like pounding a nail into a dead horse. I would like to thank all of Miles' readers who have taken this strange ride with me, and of course, I thank Miles for the opportunity to share it with you. Let me now close with excerpts from a chilling scene from the film "Network".



You have meddled with the primary forces of nature Mr. Beal...You are an old man who thinks in terms of nations and peoples. There are no nations, there are no peoples, there are no Russians, there are no Arabs, there are no third worlds, there is no west. There is only one holistic system of systems. One vast, interwoven, interacting, multi-variant, multi-national dominion of dollars...It is the international system of currency which determines the totality of life on this planet. That is the natural order of things today...Am I getting through to you, Mr. Beal? You get up on your little 21-inch screen and howl about America and democracy. There is no America. There is no democracy. There is only IBM, ITT, and AT&T. And Dupont, Dow, Union Carbide, and Exxon. Those are the nations of the world today... We no longer live in a world of nations and ideologies, Mr. Beal. The world is a college of corporations, inexorably determined by the immutable bylaws of business. The world is a business Mr. Beal. It has been since man crawled out of the slime. Our children will live, Mr. Beal, to see that perfect world in which there's no war, or famine, oppression, or brutality. One vast and ecumenical holding company, for whom all men will work to serve a common profit. In which all men will hold a share of stock. All necessities provided. All anxieties tranquilized. All boredom amused. And I have chosen you Mr. Beal to preach this eventual.

Why me?

Because you're on television dummy.

"The owners of this country know the truth. It's called the American dream 'cause you have to be asleep to believe it". George Carlin.